



# OVERHEAD LIFTING PRODUCTS AND SERVICES



# WHO WE ARE

- Full-service provider of overhead crane products and solutions.
- Family-owned since 1980.
- Grown from a local parts supplier to a North American industry leader.
- Executive Member of the Crane Manufacturer's Association of America (CMAA).
- Designs and manufactures custom overhead cranes and components to CMAA and AIST specifications.
- In-house team of mechanical, structural, and electrical engineers.
- Offers custom design, application assistance, and manufacturing focused on customer needs.
- Provides installations, inspections, and field service repairs for all overhead crane makes and models.
- Ensures compliance with local regulations for safe, productive operations.
- Distributor of a wide range of crane parts and components, offering brand flexibility.
- Focused on understanding customers' needs and delivering specialized expertise and long-term solutions.

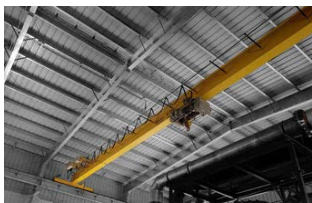


# WHAT WE DO

- Specialize in assisting with existing cranes and new overhead material handling equipment.
- Act as extensions to customers' engineering and maintenance departments.
- Provide overhead crane asset management services.
- Maintain equipment for use, or prepare for replacement or sale.
- Offer professional services for all company sizes.
- Ensure successful material handling operations as a trusted partner.
- Confident in our experience, knowledge, and dedication.
- Provide premium products and quality service.



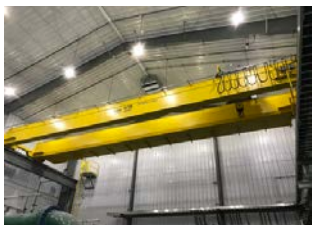
# OVERHEAD CRANES



## SINGLE GIRDER CRANES

Cost-effective overhead lifting equipment.  
Limitations in span (20-50 ft) and lift (15-50 ft).  
Handles 1-15 tons.

Suitable for light to moderate service.  
Ideal as a standby or infrequently used crane.



## DOUBLE GIRDER CRANES

Consists of 2 bridge girders supported on 2 end trucks.  
Provides quicker operation and better lifting height than single girder cranes.  
Used for lifting capacities over 10 tons and spans greater than 60 feet.  
Suitable for fitting with walkways, lights, cabs, magnet reels, and other specialized equipment.



## PATENTED TRACK CRANES

Available in double girder or single girder arrangements.  
"Patented track" refers to the hardness of the load-bearing surface and ability to bend into curves without damage.  
Used in specialized industries with high repetition in harsh environments.



## GANTRY CRANES

Customizable for various applications and service requirements.  
Used as workstation units below primary overhead cranes.  
Serves as independent units, eliminating the need for a runway structure.  
Ideal for facilities without existing runways or buildings.



## FREESTANDING RUNWAY CRANES/WORKSTATION CRANES

Freestanding Runway Systems designed and manufactured to application requirements.  
Fully customizable to any capacity, span, lift, or runway length.  
Ideal for buildings with unsuitable structures.  
Gorbel Workstation Cranes improve productivity, quality, and safety.



## JIB CRANES

Stationary or fixed crane with a cantilevered girder supported from a vertical support.  
Used in smaller work cell areas and for unique, repetitive lifts.  
Available in wall mounted, column mounted, full, and drop cantilever configurations.



## HAZARDOUS DUTY CRANES

Special equipment for overhead material handling in explosive atmospheres.  
Heavily utilized in the oil and gas industry.  
Typical features include manual hoists and trolleys, spark-resistant components, and materials like copper, bronze, and stainless steel.



# OVERHEAD CRANE APPLICATIONS

MANY INDUSTRIES REQUIRE SPECIALIZED  
LIFTING SOLUTIONS

## HAZARDOUS DUTY

Explosive atmospheres require special equipment because of the dangers involved and the stringent safety guidelines.

## AUTOMATED

Saves time, money, improves product quality and reduces risk of worker injury from repetitive handling tasks.

## OUTDOOR

Require weather-resistant features such as corrosion resistance, NEMA 4 electric enclosures, storm locks and wind loading.

## INDUSTRIES SERVED

- |                |                   |                                |
|----------------|-------------------|--------------------------------|
| ■ AERONAUTICAL | ■ FOOD            | ■ PIPE                         |
| ■ ALUMINUM     | ■ FORGING         | ■ RAIL                         |
| ■ AUTOMOTIVE   | ■ FOUNDRIES       | ■ SPECIALTY METALS             |
| ■ BAR/REBAR    | ■ GLASS           | ■ STEEL - PRIMARY PRODUCERS    |
| ■ BEARING      | ■ HEAVY MACHINERY | ■ STEEL - SECONDARY PROCESSORS |
| ■ CHEMICAL     | ■ MACHINING       | ■ TOOL & DIE                   |
| ■ CONCRETE     | ■ MINING          | ■ TRUCKING                     |
| ■ CONSTRUCTION | ■ OIL & GAS       | ■ TUBE                         |
| ■ DEFENSE      | ■ PAPER           | ■ UTILITIES                    |
| ■ FABRICATION  | ■ PLASTIC         | ■ WAREHOUSING                  |
|                |                   | ■ WATER TREATMENT              |

# CUSTOM AND PACKAGED EQUIPMENT

## PACKAGED CRANES

### PRE-ENGINEERED HOISTS

- Typically lighter capacity and slower speeds
- Lifting capacities range to 35 tons
- AC Voltage
- Wire rope or chain lifting medium

## CUSTOM CRANES

### CUSTOM BUILT-UP HOISTS

- Designed to handle any specialized lifting specification
- Lifting capacities up to 200 tons
- AC or DC Voltage
- Proprietary gearbox designed for hoist duty

## INVESTING IN OVERHEAD LIFTING EQUIPMENT

*There are many factors to consider when researching capital overhead material handling equipment investments. Our specialty is to walk our customers through the overhead material handling process to provide the right equipment for your application.*

### QUESTIONS TO CONSIDER

When selecting the proper hoist there are many factors to consider:

- The weight of the load including below-the-hook lifting, load supporting, and positioning devices
- Physical size of the load
  - Design for center of gravity (for control and stability)
  - Lift – the vertical distance the load can be moved
- Clearance Considerations
  - Headroom
  - Obstacles to be cleared during load transfer
  - Design for vertical lift including holding device height
- Lifting Speed Considerations
  - Distance load needs to be raised and lowered
  - Frequency of use
  - Required positioning accuracy
  - Nature of the load being lifted
  - New Construction

### HOIST DUTY CLASSIFICATION

Another important factor is the Hoist Duty Classification. These classifications are based on a number of factors such as: the number of lifts performed per hour, max. number of starts/stops per hour, and average and max. weight to be lifted. The hoist duty rating should meet and/or exceed your operational needs.

### CRANE DUTY CLASSIFICATION

A crane duty cycle group categorizes the anticipated frequency of use; the range is from light duty up to very heavy duty. It is vital to define the needs and estimate use for safety reasons, and to ensure a long working life for the crane. As to the types of cranes covered under CMAA (Crane Manufacturers Association of America) Specification No. 70 (Top Running Bridge and Gantry Type Multiple Girder Electric Overhead Traveling Cranes); there are six different classifications of cranes, each dependent on duty cycle. Within the CMAA Specification is a numerical method for determining exact crane class based on the expected load spectrum.

### WE CAN HELP

G.W. Becker, Inc. works with a variety of hoist manufacturers, as well as manufacturing in-house, to get you the best equipment for your specific application.



# CUSTOM BUILT-UP HOISTS

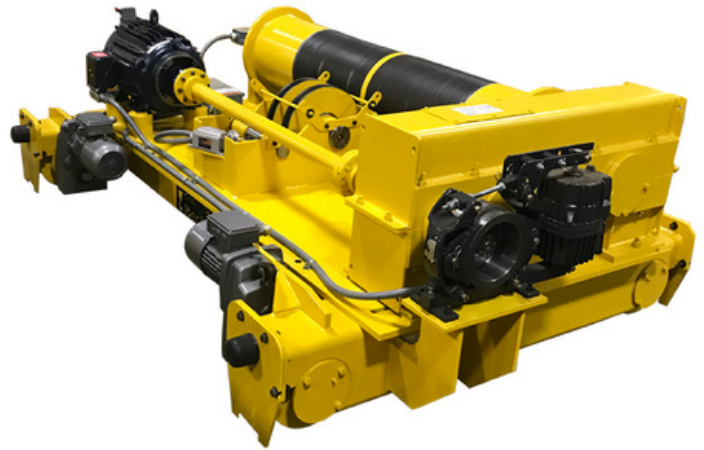
- Top-running wire rope hoist designed per CMAA Specifications for Class 'D' & 'E' Service, with capacities up to 75 tons.

- Custom-built for crane builders and end users prioritizing durability and strength.

- Features include customizable gauge, lift, and speed options.

- Powerful gear case ensures performance and reliability for lifting applications.

- Engineered with standardized components for lower cost of ownership and easy replacement of wear items.



*Our custom built-up, top-running wire rope hoist has many optional features to fit your application*

# PACKAGED CRANES

G.W. Becker, Inc. offers standard "Packaged" equipment for single and double girder applications up through HMI H4 duty and CMAA Class "D" Service. These pre-engineered cataloged hoists are designed to cost effectively handle most industrial lifting specifications.

- Typically lighter capacity and slower speeds
- Typically light service use
- Variety of configurations (Top Mounted, Monorail or Deck Mounted)
- AC Voltage
- Wire Rope or Chain lifting medium
- Single or Double Reeved
- Available for some special applications
- Many standard options
- Lifting capacities range to 35 tons
- Lifts to 140'
- Available for explosion proof applications



*We work with numerous hoist distributors:*



# OVERHEAD CRANE SERVICE

**G.W. Becker, Inc. is a leading service provider for the overhead crane industry. Breakdowns create issues to your production schedule and can be avoided. Our qualified technicians are trained to solve complex, critical, overhead crane problems. With the assistance of our staff of electrical and mechanical engineers, we are able to offer the correct solutions to you, 24/7 – 365 days a year.**

## MAINTENANCE & REPAIRS

As with any piece of equipment, failure at some point and time can be expected. G.W. Becker, Inc. technicians are highly trained & qualified in troubleshooting, maintenance and repairs for all makes and models of cranes.

- Quality Parts – All makes & models
- 24hr breakdown service
- Competitively priced
- Fast delivery
- Full service repair for hoist and cranes

## OUR TECHNICIANS ARE TRAINED IN:

- Aerial & Scissor Lift Qualifications
- OSHA 10 & OSHA 30 Qualifications
- Arc Flash
- Bench & Pedestal Grinder
- Compressed Gas Cylinder
- Crane Inspection & Maintenance
- Fall Protection
- Fire Safety & Response
- First Aid (CPR/AED)
- Hazard Communication
- NCCCO Mobile Crane Certified
- Lockout/Tagout (LOTO)
- Forklift Operation & Safety
- Overhead Crane Operator Certified
- PPE
- Shop Environment Safety
- Welding Safety

## PREVENTIVE MAINTENANCE

- Regularly scheduled preventive maintenance service prevents equipment failure.

- Increases overhead crane reliability and longevity.

- Manages planned maintenance and creates efficient schedules.

- Helps budget and balance workload effectively.

## SELF-PERFORMING INSTALLATION

- We will manage overhead crane installation projects from start to finish.

- Offers turnkey services including conceptual runway design, crane manufacturing, and self-performing installation.



# OVERHEAD CRANE INSPECTIONS

G.W. Becker, Inc. offers inspection services for all makes and models of overhead cranes, hoists, and below-the-hook devices; providing compliance with local regulations and ensuring a safe and productive material handling operation. Our frequent, periodic and maintenance inspections provide you with a report on your crane and hoist equipment, allowing you to plan maintenance and repairs to keep your equipment operating efficiently, reliably, and safely.



## FREQUENT INSPECTIONS

- Conducts routine inspections crucial for overhead crane reliability and safety.
- Utilizes highly trained technicians experienced in all makes and models.
- Offers Frequent Inspections that exceed standard practices.



## PERIODIC INSPECTIONS

- Periodic Inspections includes detailed visual and operational check of individual components.
- Conducted by experienced, fully trained crane technicians.
- Ensures overhead crane reliability and safety compliance.



## DIGITAL REPORTING SYSTEM

- Frequent, periodic, and maintenance inspections provide detailed reports on crane and hoist equipment.
- Utilizes a mobile reporting tool for efficient planning of maintenance and repairs.
- Ensures equipment operates efficiently, reliably, and safely.



# ENGINEERING SERVICES

Our engineering team is equipped with a Professional Engineer licensed in multiple states and degreed engineers with extensive experience in Electrical, Mechanical and Structural Engineering. At G.W. Becker, Inc., we specialize in assisting our customers with existing cranes or capital equipment they are anticipating investing in. In this sense, we act as extensions to their own engineering and maintenance departments.

## ASSET MANAGEMENT

- Crane Valuations
- Crane Liquidations – Buying & Selling
- Crane Removal
- Crane Reconditioning
- Critical Crane Analysis

## APPLICATION ASSISTANCE SERVICES

- Project Planning
- Specification Development
- Crane Design

## INSPECTION & ASSESSMENT SERVICES

- Structural Overhead Crane Runway Surveys & Inspections
- Engineered Detailed Overhead Crane Inspections
- Critical Crane Analysis

## ENGINEERING & ANALYSIS SERVICES

- New Construction Design
- Runway Construction Design
- Capacity Analysis
- Capacity Upgrades
- Crane Analysis
- Modifications
- Expansions

## CONSTRUCTION ASSISTANCE SERVICES FOR OVERHEAD CRANE USE

- Overhead crane dimensional envelopes and wheel loads
- Pre-Engineered Metal Building design support
- On-site support during runway & rail erection



# OVERHEAD CRANE TRAINING

## OPERATOR TRAINING

Teaching overhead crane operators how to operate a crane, proper use of below-the-hook devices, and daily inspection requirements.

## SAFETY SESSION

Teaching overhead crane operators basic OSHA daily inspections, inspection methods, and basic safe use of material handling equipment.

## RIGGERS & LOADERS

Teaching overhead crane operators prevention of shock loading, critical lifts, non-uniform loads, proper hitches, and OSHA inspection requirements.

## OPERATOR TRAINER TRAINING

Teaching overhead crane operators how to conduct training with their own personnel.

## MAINTENANCE & INSPECTION TRAINING

Teaching overhead crane operators maintenance terminology and components, inspection guidelines, and more.



THE COST WILL VARY DEPENDING ON LOCATION, LENGTH, AND THE NUMBER OF ATTENDEES. SESSION COSTS ARE TAX-DEDUCTIBLE. TRAINING SESSIONS CAN EITHER BE IN PERSON AT OUR FACILITY, YOUR FACILITY, OR VIRTUALLY. THERE IS NO ADDITIONAL COST FOR CERTIFICATION.

# OVERHEAD CRANE PARTS

G.W. BECKER, INC. IS A DISTRIBUTOR OF A FULL LINE OF CRANE RELATED PRODUCTS AND ACCESSORIES. WE HAVE NUMEROUS VENDOR RELATIONSHIPS THAT HELP YOU KEEP YOUR SERVICEABLE OVERHEAD CRANES OPERATING AT PEAK EFFICIENCY.

## BRANDS WE WORK WITH:



MAGNETEK



CATTRON



CLEVELAND



TRAMRAIL  
By Gorbel Inc.



## WE CAN PROVIDE:

- Motors
- Motor Control
  - AC, DC and Variable Frequency
- Gearboxes and Drives
- Master Switches
- Runway Electrification
- Festoon Systems
- Pushbutton Stations
- Radio Controls
- Limit Switches
- Lower Blocks
- Hooks
- Sheaves
- Brakes
- Custom Brake Wheels
- Wheels and Wheel Assemblies
- Reverse Engineering
- Below-the-Hook Devices

## VISIT OUR WEBSITE

Learn more about the parts that we have available, and the components that we specialize in building in house.

[GWBCRANE.COM/PRODUCTS/PARTS](http://GWBCRANE.COM/PRODUCTS/PARTS)



# MECHANICAL PARTS

G.W. BECKER, INC. IS A FULL SERVICE, TURNKEY, PROVIDER OF CHOICE FOR QUALITY OVERHEAD CRANE PRODUCTS AND SOLUTIONS. OUR MECHANICAL PARTS ARE PRECISION-ENGINEERED & MANUFACTURED TO OFFER THE MOST RELIABLE PRODUCT AVAILABLE. WHILE PREVIOUS SUPPLIERS MIGHT OFFER AN INITIAL SAVINGS, BUT WITH CHEAP MECHANICAL PARTS, YOU ARE ONLY LOWERING THE PERFORMANCE AND RELIABILITY OF YOUR EQUIPMENT. G.W. BECKER, INC. MECHANICAL PARTS PROVIDE THE DURABILITY YOU NEED BECAUSE WE ONLY OFFER PARTS EXCLUSIVELY FOR OVERHEAD TRAVELING CRANES. WE HAVE OUR OWN FABRICATION AND MACHINE SHOP TO CUSTOM FIT FOR YOUR EXACT NEEDS.

## SHANK HOOKS

- The most complete line of shank hoist hooks. Available 3/4 to 300 tons.
- Load rating code stamped on each hook
- Quenched and tempered
- Available in carbon steel, alloy steel, and bronze
- Proper design, careful forging, and precision controlled quench and tempering give maximum strength without excessive weight and bulk
- Every shank hook has a pre-drilled cam which can be equipped with a latch
- Finished machining available, special block configurations, hook threading, and nut ready for easy assembly with pre-drilled locking pin hole
- Also available are custom built, heavy duty, safety latches, and thrust bearings

## BRAKE WHEELS

- A wide variety of wheels for most sizes and types of braking systems including hydraulic, electrical, and mechanical
- Non-standard size wheels, wheels made with carburized steel, and brake wheel couplings are also available
- STANDARD FEATURES
  - Manufactured from ductile-iron
  - Completely machined to provide proper balance at normal speeds
  - Resistant to scoring
  - Wears smoothly and evenly
  - Good compatibility with friction materials
  - Semi-finished with rough pilot bore

## SHEAVES

- The most complete line of sheaves for hoisting
- Custom machined wire rope sheave to your desired measurements or OEM Specifications
- Manufactured sheaves starting from Grey Iron Castings and from Billets of 4130, 4140 or 4145 Heat Treated Material

## LOAD BLOCKS

- The most complete line of load blocks for hoisting
- Custom manufactured wire rope load blocks to fit your lifting requirements; sheave configuration, capacity, and reeving
- STANDARD FEATURES
  - Forged hook with safety latch
  - Machined steel sheaves
  - Welded steel construction
  - Roller bearings for smooth rotation
  - Lubrication fittings for hook and sheave bearings

## CRANE WHEELS

- Quality crane wheels for overhead crane applications
- Improve performance and reliability of your equipment
- STANDARD FEATURES
  - Manufactured from carbon or alloy steels
  - Available in a wide range of standard sizes
  - Non-standard size wheels are also available
  - Available in any surface hardness up to 60 Rc
  - Also able to be Deep Hardened

# FABRICATING AND MACHINING CAPABILITIES

G.W. Becker, Inc. provides manufactured products and services with our own in-house precision machine shop and engineering department to offer design, fabricating, machining, and assembly. We supply complete design services from our staff of engineers or manufacturing per your supplied drawings and specifications. We offer all levels of production; from prototype, one-off's, and reverse engineered parts to high quantity pieces with our customer's needs first and foremost.

## MANUFACTURING SPACE

72,000 SF Facility – 50 Ton Lifting Capacity  
Advanced Material Preparation  
Certified Welders per AWS D1.1 & D14.1  
Machine Shop with CNC Capability  
Mastercam CNC Software

## QUALITY ASSURANCE

Welders Certified per AWS D1.1 & D14.1  
Non-Destructive Testing (NDT)  
Metallurgy Evaluation  
Hardness Testing  
Laser Alignment Systems  
Materials and Processes Certification  
Formal Non-conforming Materials ID & Disposition System

## ENGINEERING CAPABILITIES

Mechanical, Structural, and Electrical Expertise  
Professional Engineers on Staff  
Machine Design - Including Gear Design  
Reverse Engineering Capabilities  
Structural Design and Evaluation  
Software Systems Utilized:  
Autodesk AutoCAD  
Autodesk Inventor Simulation Suite  
STAAD Pro Structural Analysis

## FABRICATION CAPABILITIES

### Equipment Lathes

Mazak Mega Turn 900M  
Mazak Slant Turn 600M  
Mazak Quick Turn 350MSY  
CNC Trak TRL 2460SX  
Tuda Jumbo 49in. x 236in.  
Yam 14in. x 36in.

### Mills

Mazak VC-Ez20  
CNC Trak DPM5  
Fermat WFT 13 CNC Horizontal Boring Mill 157"x/ 98" y/ 59"z/ 31" w

### Drill Press

Carlton Radial Drill 5ft. arm on 15in. column

### Saws

Cosen V2026NC  
Marvel Series 8 Mark II  
DoAll 1812-H  
Portable Band Saws  
Gas Powered Abrasive Saw

### Key Seater

Morrison  
Climax – Portable Keyway cutter

### Surface Grinder

Chevalair FSG-618M

### Presses

Drake 32-100: 300 Ton w/ 36ft. length  
100 Ton "H" Frame w/ 44in. length

### Beam Drill Line

Ocean Avenger 30 - 30in. x 40ft.

### Shot Blasting Equipment

Pangborn ES 1821  
6ft. wide plate / 36in. WF beam / 42in. beam height

### Burn Table

Farley Laser Labs 10' x 40' Plasma and Oxy/Fuel multiple head cutting, milling and drilling

### Submerged Arc Welding

Lincoln Electric dual head gantry welder 150' long

Choosing the right Overhead Crane PARTNER is critical to the success of your material handling operations. G.W. Becker, Inc. is confident that we have the experience, knowledge, and dedication to become an extension of our customer's management team in the area of Cranes/Overhead Material Handling Systems, by providing premium products and quality service.

## OVERHEAD CRANES

---

Double Girder Cranes  
Single Girder Cranes  
Gantry Cranes  
Jib Cranes  
Freestanding Runway Cranes  
Workstation Cranes  
Patented Track Cranes  
Monorail Cranes

## OVERHEAD CRANE HOISTS

---

Custom Built-Up Hoist  
Wire Rope Hoist  
Electric Chain Hoist  
Manual Chain Hoist

## FABRICATING & MACHINING

---

Full manufacturing facility with to fill any manufacturing or fabrication need

## SERVICE & INSPECTIONS

---

Maintenance & Repairs  
Preventive Maintenance  
Self-Performing Installation  
Overhead Crane Inspections

## ENGINEERING SERVICES

---

Asset Management  
Application Assistance  
Inspections & Assessment  
Engineering & Analysis  
Construction Assistance  
Services - Overhead Cranes

## OVERHEAD CRANE TRAINING

---

Crane Operator  
Inspection & Maintenance  
Riggers & Loaders  
Safety Session  
Train-the-Trainer



**Sales and Service Facility**  
1565 Broadway Rd.  
Hermitage, PA 16148

---

**Manufacturing Facility**  
2600 Kirila Blvd.  
Hermitage, PA 16148